



Swine-Senior



Question 1



What breed is this?

- A. Poland China
- B. Yorkshire

- C. Berkshire
- D. Hampshire



Question 2



What breed is this?

- A. Tamworth
- B. Duroc

- C. Landrace
- D. Hampshire



Question 3



PRRS stands for Porcine Respiratory and Reproductive_____.

- A. Syndrome
- B. Syncope

- C. Sonogram
- D. Sound



Question 4

What is a male castrated pig called?



A. Boar

B. Wether

C. Barrow

D. Steer



Question 5



What are the teeth called that get clipped in piglets?

- A. Tusk
- B. Molars
- C. Needle Teeth
- D. Premolar



Question 6



What cut of meat is this?

A. Sirloin Roast

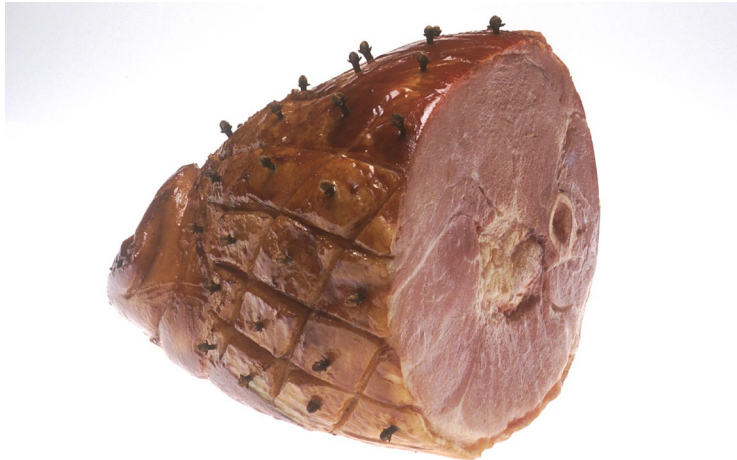
B. Shoulder/Picnic

C. Blade Roast

D. Hock



Question 7



What cut of meat is this?

A. Ham

B. Spareribs

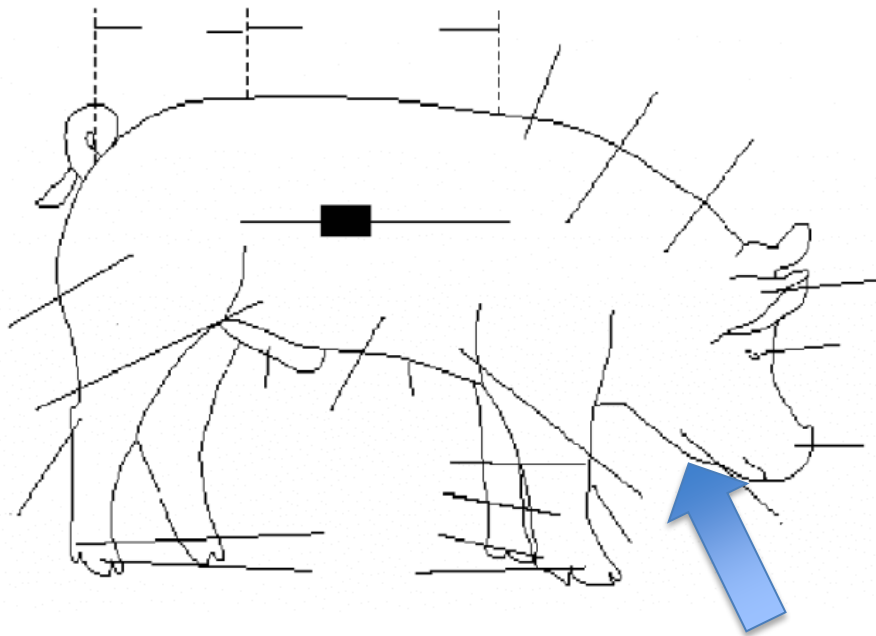
C. Loin Roast

D. Ham Steak



Question 8

What part is this?

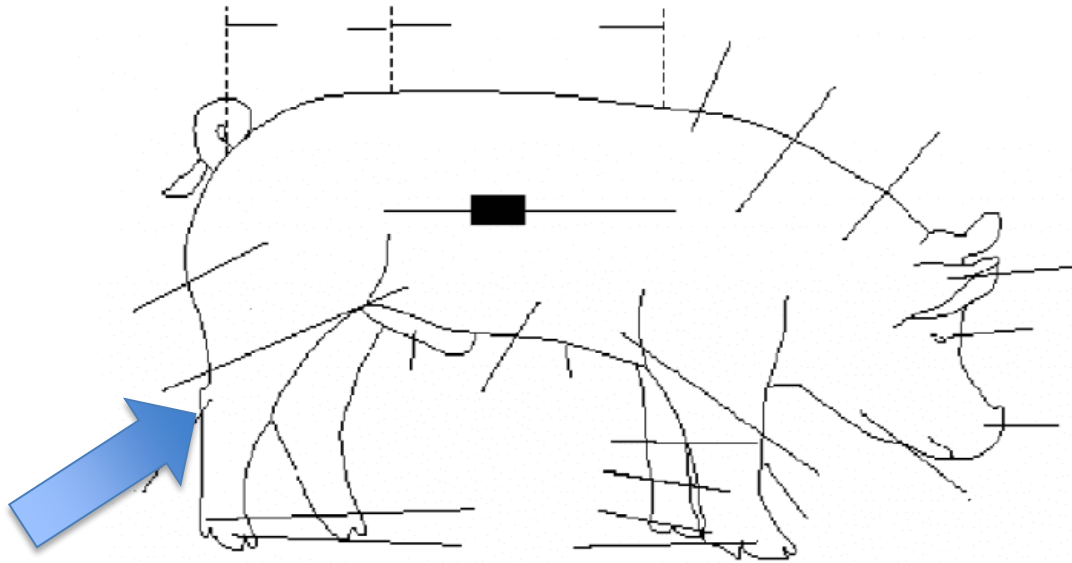


- A. Neck
- B. Snout

- C. Jowl
- D. Elbow



Question 9



What part is this?

- A. Rump
- B. Pastern
- C. Rear Flank
- D. Hock



Question 10

What is the gestation period for a gilt/sow?



- A. 100 days
- B. 365 days

- C. 200 days
- D. 114 days



Question 11



What is the normal temperature range for a pig?

- A. 100-101° F
- B. 101-102° F

- C. 103-104° F
- D. 104-105° F



Question 12

What is a health problem that can affect the snout (nose) of a pig?



- A. Exudative Dermatitis
- B. Mastitis

- C. Atrophic Rhinitis
- D. Porcine Parvovirus



Question 13



What is a female called that has had 2 or more litters?

- A. Gilt
- B. Boar

- C. Ewe
- D. Sow



Question 14

What is this tool?



- A. Clamps
- B. Shearer

- C. Ear Notcher
- D. Elasticator



Question 15

What mineral do they give piglets when they are born?



A. Iron

B. Potassium

C. Magnesium

D. Copper



Question 16



When reading ear notches on pigs, which ear represents the litter number ear?

- A. Left Ear
- B. Right Ear

- C. None
- D. Both



Question 17

What is the medicine called that is used to deworm pigs?



- A. Penicillin
- B. Ivermectin

- C. LA 200
- D. Trifexis



Question 18



How long should medication and treatment records be maintained?

- A. 12 months
- B. 6 months

- C. 24 months
- D. 36 months



Question 19

What is a common internal parasite in pigs?



- A. Ticks
- B. Lice

- C. Round Worm
- D. Mites



Question 20



What is the term called when a sow is giving birth?

- A. Farrowing
- B. Lambing

- C. Gestation
- D. Estrus



Question 21

What is the average weight when hogs are marketed for slaughter?



- A. 200-220 lbs
- B. 230-260 lbs

- C. 280-300 lbs
- D. 240-280 lbs



Question 22



What is it called when a pig loses weight after being hauled?

- A. Shrink
- B. Weight Loss
- C. Minimize
- D. Decrease



Question 23

Back fat in swine is measured at which location?



- A. 8th Rib
- B. 4th Rib

- C. 10th Rib
- D. 12th Rib



Question 24



An average loin eye area from a market weight pig should measure around how many square inches?

A. 4-5 sq. in.

B. 10-11 sq. in.

C. 6-7 sq. in.

D. 9-10 sq. in.



Question 25

Which is the most practical source of protein for a commercial pig weighing 150 lbs.?



A. Magnesium

B. Soybean Meal

C. Calcium

D. Corn Meal



2022 Michigan Skillathon - Swine

1	D	14	C
2	B	15	A
3	A	16	B
4	C	17	B
5	C	18	A
6	B	19	C
7	A	20	A
8	C	21	D
9	D	22	A
10	D	23	D
11	B	24	C
12	C	25	B
13	D		

